

CYS-BMT High Silica Fabric

High silica fabric is a kind of excellent fabric made of high temperature resistance, inorganic fiber. The content of SiO₂ is more than 96% and the weight loss of ignition is less than 3%. Its softening point is closely 1700°C and it can be used under 900°C situation for a long time.

It is an ideal replacement for asbestos and useful for thermal and electrical insulation in severe application environments, such as rocket, the missile, the thermal insulation of spacecrafts. It can be treated in different ways to meet specific purposes.

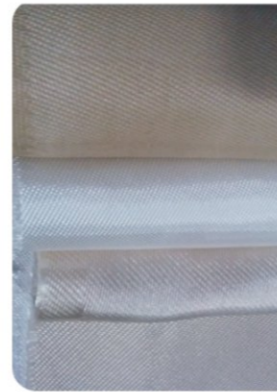
Product Applications

It is used for the rocket, the missile, the thermal insulation of spacecrafts as ablative materials, high temperature-proof materials and high temperature-resistant insulation materials.

- ★ Used for welding/cutting protection
- ★ Molten metal splash protection
- ★ Heat and flame shielding, stress relief, insulation
- ★ Hoses, seals, pads, and emergency fire blankets

Product Features

- ★ Good chemical stability.
- ★ Excellent insulating property.
- ★ Excellent high-temperature resistance.
- ★ Good acid resistance and erode resistance.
- ★ Low shrinkage and thermal conductive.



Type of Glass	High Silica
Unit weight (g/m ²)	240~1300
Width (mm)	860, 920

Technical Parameters

Item	BMT240	BMT340	BMT520	BMT600	BMT1100	
Thickness (mm)	0.25±0.025	0.4±0.04	0.65±0.065	0.75±0.075	1.3±0.13	
Weight (g/m ²)	240±20	340±30	520±50	600±60	1100±100	
Width (mm)	without	920±20	920±20	920±20	920±20	
	Heat treatment	860±20	860±20	860±20	860±20	860±20
SiO ₂ contents (%)	≥96	≥96	≥96	≥96	≥96	
Breaking Strength (N/25*100mm)	Warp	≥290	≥400	≥600	≥700	≥1200
	Weft	≥190	≥300	≥500	≥600	≥800
Fabric Structure	Plain	Satin	Satin	Satin	Satin	

Storage

High silica fabric should be stored in its original packaging in a dry, cool and water-proof place. The recommended conditions are at temperatures from 15 to 35°C and humidity between 35 and 65%. To ensure safety and avoid damage to the product, the pallets should not be stacked more than three layers high, when the pallets are stacked in 2 or 3 layer, care should be taken to correctly and smoothly move the top pallet.

Packaging

High silica fabric is wound onto a paper tube which has an inside diameter of 80mm. The roll outside diameter is approximately 275mm. Each roll is wrapped up in plastic film and then packed in a carton. The rolls are stacked horizontally onto pallets. All pallets are stretch wrapped and strapped to maintain stability during transport.



Tel: +86-28-84400953
Fax: +86-28-84528597
Cell phone: +86-13908045028

Email: liyibin@169chem.net info@169chem.net
MSN: liyibinle@hotmail.com info@169chem.net
http: //www.169chem.net



CYS-BMT 高硅氧玻璃纤维布

高硅氧玻璃纤维布是一种特种玻璃纤维布，由耐高温无机纤维制成。SiO₂含量高于96%，热失量低于3%，软化点接近1700°C，可在900°C下长时间作业。

产品应用

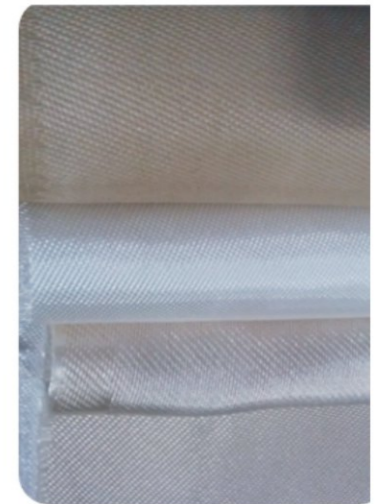
应用于火箭、导弹、航空航天作为耐烧蚀材料、隔热防护材料和耐高温绝缘材料。

- ★ 用于焊接、切割防护
- ★ 用于金属熔融飞溅防护
- ★ 用于防火墙隔热、防火
- ★ 用于灭火毯

产品特征

- ★ 良好的化学稳定性
- ★ 优异的绝缘性能
- ★ 优异的耐高温性能
- ★ 良好的耐腐蚀性
- ★ 低收缩率，低导热系数

玻璃类型	高硅氧纤维
单位面积重量 (g/m ²)	240~1300
幅宽 (mm)	860, 920



技术参数

项目	BMT240	BMT340	BMT520	BMT600	BMT1100	
厚度 (mm)	0.25±0.025	0.4±0.04	0.65±0.065	0.75±0.075	1.3±0.13	
单位面积重量 (g/m ²)	240±20	340±30	520±50	600±60	1100±100	
幅宽 (mm)	未做热处理	920±20	920±20	920±20	920±20	
	热处理	860±20	860±20	860±20	860±20	860±20
SiO ₂ 含量 (%)	≥96	≥96	≥96	≥96	≥96	
拉伸断裂强度 (N/25*100mm)	经向	≥290	≥400	≥600	≥700	≥1200
	纬向	≥190	≥300	≥500	≥600	≥800
织物结构	平纹	缎纹	缎纹	缎纹	缎纹	

存储

在没有特殊要求的情况下，高硅氧玻璃纤维布应贮存在干燥、凉爽的地方，防止受潮，产品在使用前应始终保存在原包装内。建议保持室内温度平衡，最佳存储条件为15~35°C，湿度35~65%。为确保安全，避免损坏产品，托盘的堆码高度不应超过三层。当堆放两层或三层高时，要求正确地、平稳地移动上面的托盘。

包装

高硅氧玻璃纤维布是缠绕在内径为80cm的纸管上，卷管的外直径为275cm，用塑料薄膜做内部包装，外用纸箱进行包装，并以水平或垂直方式放置在托盘上。



电话: +86-28-84400953
传真: +86-28-84528597
手机: +86-13908045028

邮箱: liyibin@169chem.net info@169chem.net
MSN: liyibinle@hotmail.com info@169chem.net
网址: //www.169chem.net

